

- Bedroom
10'9" x 10'6"
- Bedroom
10'9" x 10'5"
- Kitchen
8'4" x 7'9"
- Bathroom
8'3" x 8'0"
- Reception Room
11'9" x 11'1"
- Hallway
2'10" x 23'4"



BRETTEHAM ROAD, WALTHAMSTOW

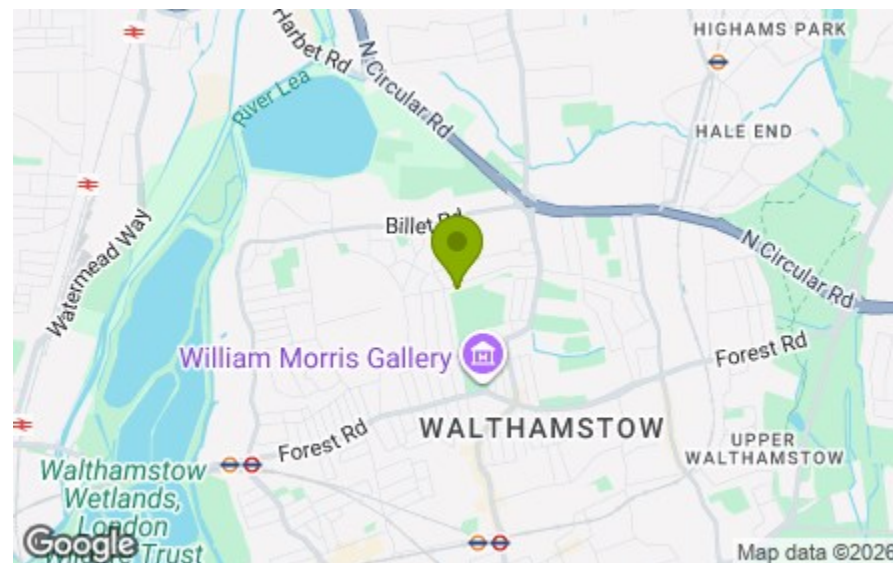
£2,200 Per Calendar Month
 2 Bed Flat



Features:

- Warner Style Apartment
- Two Bedrooms
- Well Presented
- Backing Onto Lloyd Park
- Shared Rear Garden
- Period Features
- Available Now
- Highly Sought After Location

A well-kept two-bedroom ground floor flat in a lovely Lloyd Park setting, with a shared rear garden and the green open space itself right behind you. Set on Brettenham Road, this is an ex-Warner home in good order throughout, with local favourites and the neighbourhood's easy transport connections all close at hand.



Energy Efficiency Rating		Current	Potential
Very energy efficient - lower running costs			
(82 plus)	A		
(61-81)	B		
(49-60)	C		
(35-48)	D		
(29-34)	E		
(21-28)	F		
(1-20)	G		
Not energy efficient - higher running costs			
England & Wales		70	77
		EU Directive 2002/91/EC	

E11, E7, E12 & E15
 hello11@stowbrothers.com
 0203 397 2222

E4 & N17
 hello4@stowbrothers.com
 0203 369 6444

E17 & E10
 hello17@stowbrothers.com
 0203 397 9797

E18 & IG8
 hello18@stowbrothers.com
 0203 369 1818

E8, E9, E5, N16, E3 & E2
 hellohackney@stowbrothers.com
 0208 520 3077

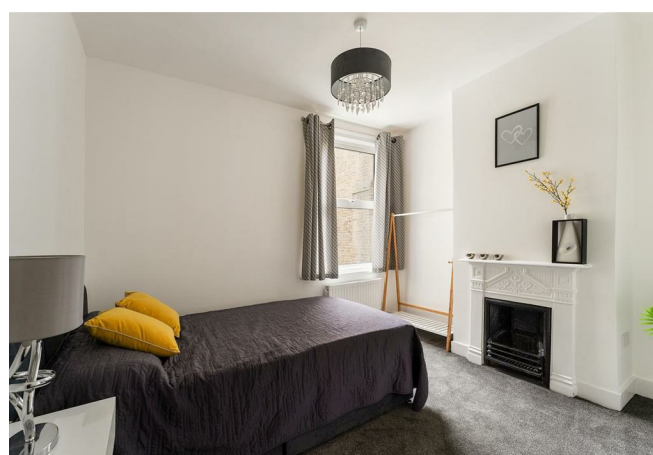
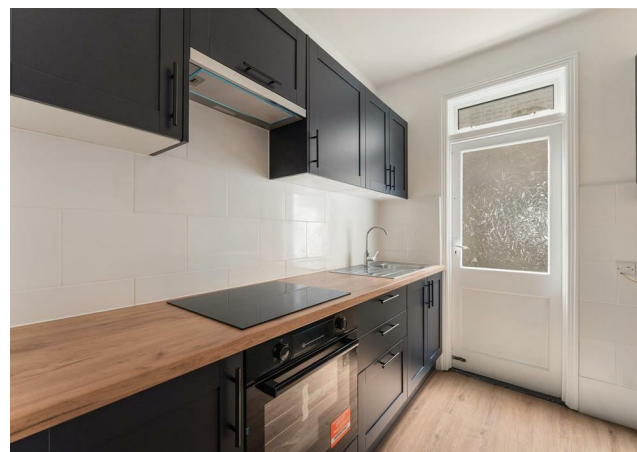
New Homes
 newhomes@stowbrothers.com
 0203 325 7227

Investment & Development
 id@stowbrothers.com
 0208 520 6220

Property Maintenance
 propertymanagement@stowbrothers.com
 0203 325 7228

STOWBROTHERS.COM
 @STOWBROTHERS

REQUEST A VIEWING
 0203 397 9797



IF YOU LIVED HERE...

A long entrance hallway gives the home a pleasing sense of flow, leading you through to each room in turn. At the front, the reception room is bright and welcoming, with a bay window, soft neutral decor and a handsome fireplace that brings a little period character. Both bedrooms are similarly balanced in size, each a good double, so the layout feels practical as well as flexible.

The kitchen is neatly arranged with dark cabinetry, timber worktops and a clean, modern finish, while the bathroom is particularly generous, with both a bath and a separate shower. Throughout, the presentation is simple and calm, making it easy to imagine settling straight in. To the rear, the shared garden adds welcome outdoor space, and with Lloyd Park just beyond, you have greenery on your doorstep in every sense. Offered with no chain, it's a straightforward home in a very special spot.

WHAT ELSE?

Lloyd Park is directly behind the property, with its much-loved Saturday market, tennis courts and open green space all close by.

The William Morris Gallery is nearby, giving this part of Walthamstow a real sense of culture as well as greenery.

You're also well placed for the new Soho Theatre Walthamstow, the Blackhorse Beer Mile and the Walthamstow Wetlands, all highlighted by the local area expert as part of everyday life here.



A WORD FROM THE EXPERT...

"I love living in Walthamstow – it's got such a great mix of things going on. Saturdays are my favourite, with the market in Lloyd Park full of fresh food, handmade bits, and plenty of friendly faces. The new Soho Theatre has brought amazing shows right to our doorstep, and if I fancy a pint, the Blackhorse Beer Mile breweries are perfect for a wander. When I need some fresh air, the Walthamstow Wetlands are just a short stroll away – all that greenery makes you completely forget you're in London. Plus, with brilliant transport links, it's so easy to hop on the Tube or Overground and be in Central London in no time at all".

WILLIAM JACKSON
E17 ASSISTANT BRANCH MANAGER

REQUEST A VIEWING
0203 397 9797

FOLLOW US → @STOWBROTHERS
STOWBROTHERS.COM